

Rotor Balancing Report

Date / Time: apr. 24, 2012 10:23:42 AM

Staff Name: W.Mudde

Location:

Machine ID:

Vibration units in: ips

Balancing RPM: 1800.0000

Rotor Weight (Kg): 0.0000

Original Vibration: 0.1002

Trial Weight (gr): 2.0000

Trial Weight Radius (cms): 7.0000

Vibration with Trial @ 0: 0.2060

Vibration with Trial @ 120: 0.0353

Vibration with Trial @ 240: 0.1855

Correction Weight (gr): 1.5928

Correction Weight Radius (cms): 7.0000

Correction Weight Angle: 130.5895

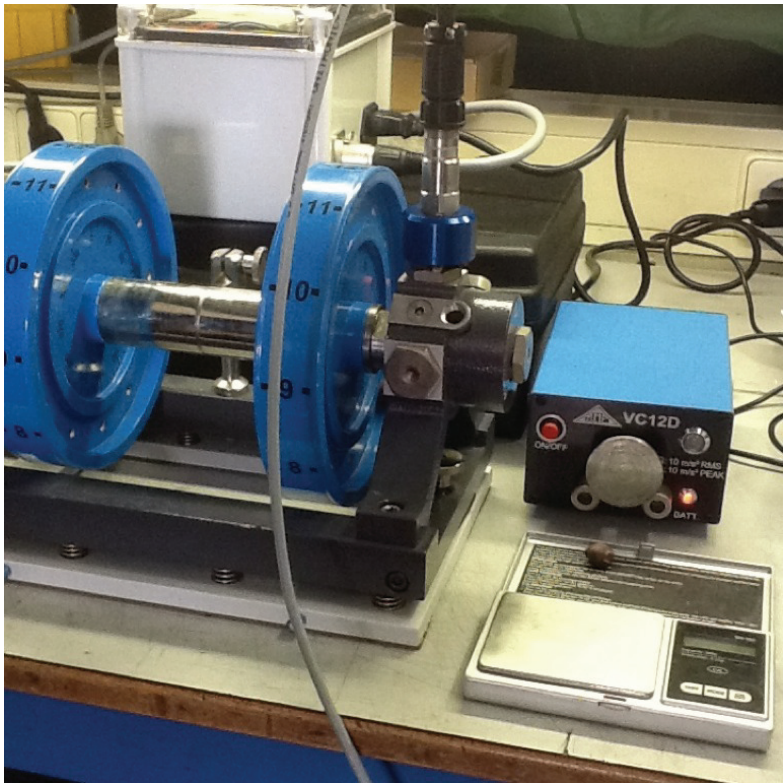
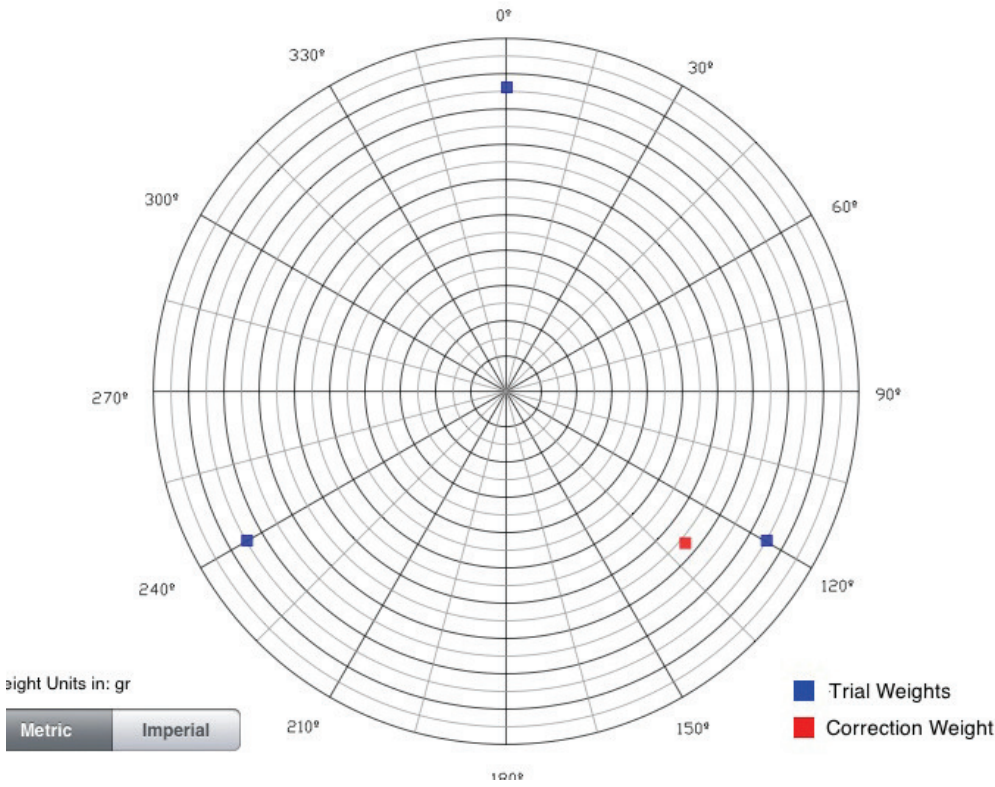
Notes

Vibration with Correction Weight: 0.0027

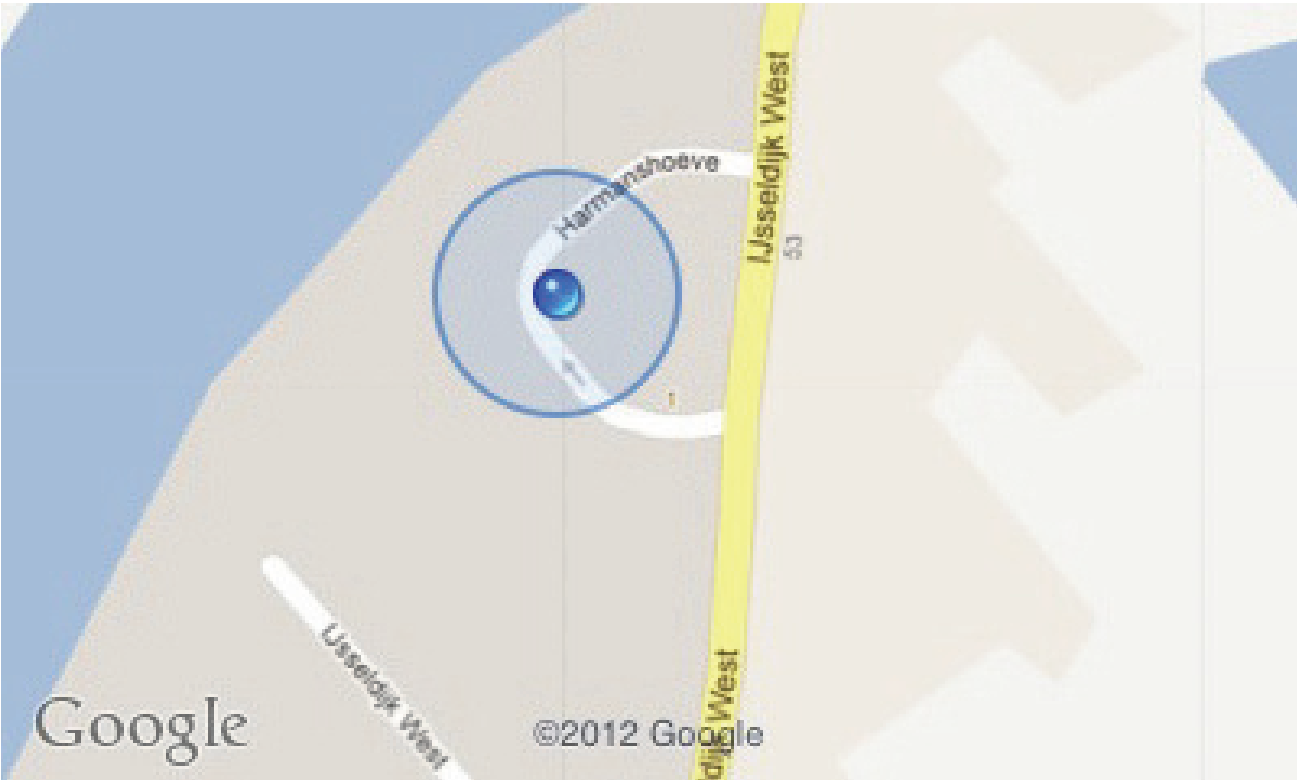
Test



Rotor Balancing Report - Attachments



Rotor Balancing Report - Attachments



Plant Location